

# Home + GARDEN

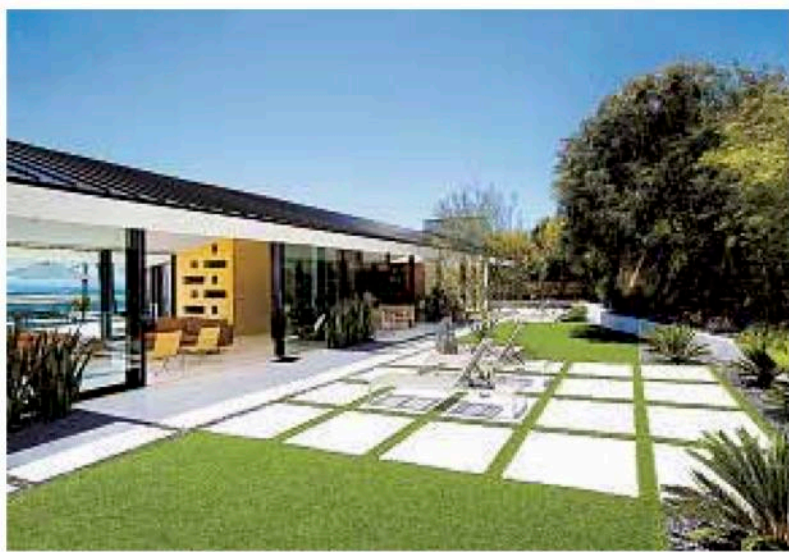


MINDY NICOLE PHOTOS

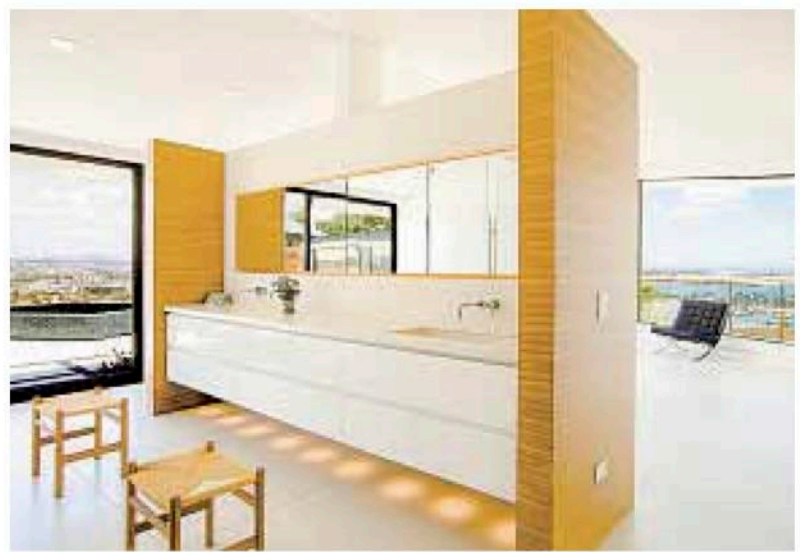
Neutral-toned Scandinavian furniture blends with the simplicity of the interior, which has an all-white color palette combined with black trim and walnut accents.

## Window to a modernist marvel

Update of a 70-year-old home sticks with floor-to-ceiling glass design to maximize Point Loma view



Italian ceramic tile continues from the interior to the drought-tolerant backyard to create a cohesive indoor-outdoor look.



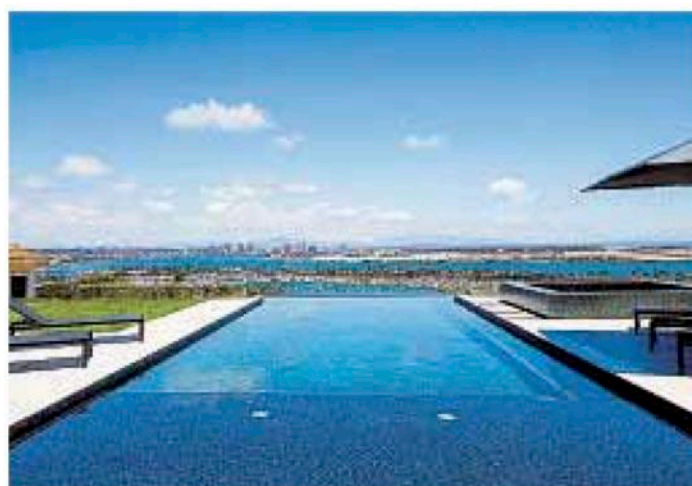
The master bedroom and bathroom are separated only by a free-standing wall. The entire home only has seven interior doors.

BY MARTINA SCHIMITSCHK

**B**uilt 70 years ago by Lloyd Ruocco, this hillside Point Loma house has a new, updated look without losing the soul of the home the renowned San Diego Modernist architect envisioned.

"The outside layout is the same. We tore everything out, but we kept the layout. Inside, everything is new," said architect Jesper Pedersen of DNA Design Group, who spent three years reinventing the property in keeping with Ruocco's design while adding sustainable materials.

"The house was exactly like this but built in the '40s. The whole house was falling apart," said the homeowner, who



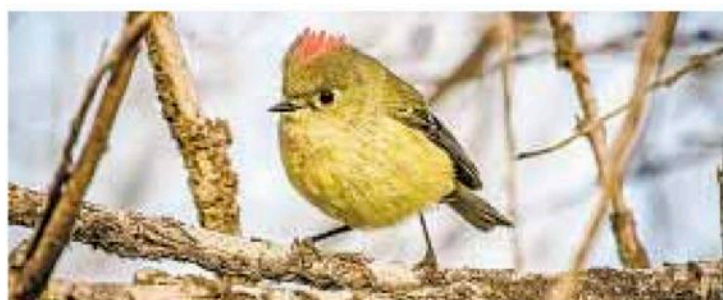
The homeowner replaced the lawn with an infinity pool, which creates sight lines to the expansive view.

wishes to remain anonymous.

The home will be open for public viewing next weekend as part of the San Diego Architectural Foundation's OH! San Diego+o (Open House San Diego) event. It will be one of 100 locations in downtown, Bankers Hill, Barrio Logan, Balboa Park and Point Loma participating in the event, which includes a number of sustainable and mixed-use buildings as well as affordable housing developments and behind-the-scenes peeks at landmarks such as the Spreckels Organ Pavilion.

Simplicity is the key to the 4,100-square-foot house that seems to consist mainly of glass under a new metal roof. Floor-to-ceiling glass walls are on the front- and back-facing sides of the house for a see-through view that expands past an infinity pool, across the bay, the cityscape and to the hills of Mexico.

SEE MODERNIST • E6



BRIAN CALDWELL

A male ruby-crowned kinglet showing off his namesake crown.

BACKYARD BIRD-WATCHING

## PHOTO OF KINGLET'S RUBY CROWN IS A RARE GEM

Elusive breed doesn't stand still for a very long

BY ERNIE COWAN

A birding friend once told me that trying to photograph a ruby-crowned kinglet was like trying to capture an image of popcorn while it's popping.

I was confirming that warning while madly moving about trying to get any shot, much less a good one, of this highly animated little bird. Not only did I want a usable photo of the kinglet, I was hoping to capture the namesake ruby crown, an

even more difficult task.

This tiny insect eater, weighing in at less than a quarter of an ounce, is a common winter visitor to San Diego, scattered widely from coastal slopes to desert riparian habitats.

On this particular day, I was rooting around in the brush at water's edge at Lake Hodges where I had spotted several of these active birds bouncing around in the winter-bare trees.

SEE KINGLET • E6

## NEED A SLEEPER SOFA? REST EASY

11 space-saving — and stylish — models transform any room into a guest room

BY LISA BOONE

As many homeowners move to living smaller in tiny houses, accessory dwelling units and mobile homes, the sleeper sofa has taken on new importance regarding space-saving needs. From modular sofas that come equipped with pop-up storage to sleek click-into-place daybeds, today's designs can be pushed, pulled and opened like a book. And they look good, too.

Here are 11 of the latest designs to hit the market. Prices were checked prior to publication but may fluctuate, depending on individual retailers.

**1. The Flipside Sofabed from Gus Modern:** The Flipside Sofabed in the new Chelsea Pacific fabric converts the clean-lined sofa into a queen-size bed with one quick flip. With easy-pull fabric handles and a removable, machine-washable cotton top sheet for overnight guests. \$1,999; gusmodern.com

**2. Thataway Sleeper Sofa from Blu Dot:** The minimal but curvaceous 102-inch Thataway sofa features an easy-flip cushion that creates a bed with a touch of the hand. Available in Tait Charcoal upholstery (90 percent polyester and 10 percent linen blend). \$1,999; bludot.com



The Flipside Sofabed from Gus Modern: Shown in the new Chelsea Pacific fabric, the clean-lined sofa converts into a queen-size bed with one quick flip.



GUS MODERN

**3. Stay Daybed from Jayson Home:** The handy trundle on the tufted Stay Daybed can be pulled out from under the daybed to create a twin bed or up to create a queen-size bed. Available in canvas-granite cotton fabric (85 percent

cotton, 15 percent polyester) and black walnut wood finish. \$3,595; jaysonhome

**4. Wink Sleeper from Crate & Barrel:** The no-nonsense Wink Sleeper can accommodate three positions: sitting upright, lounge position and sleeper — and is ideal for apartments and other small

SEE SLEEPER • E3